

Environmental Impact Statement (EIS) Guide

Find out about what is important to you

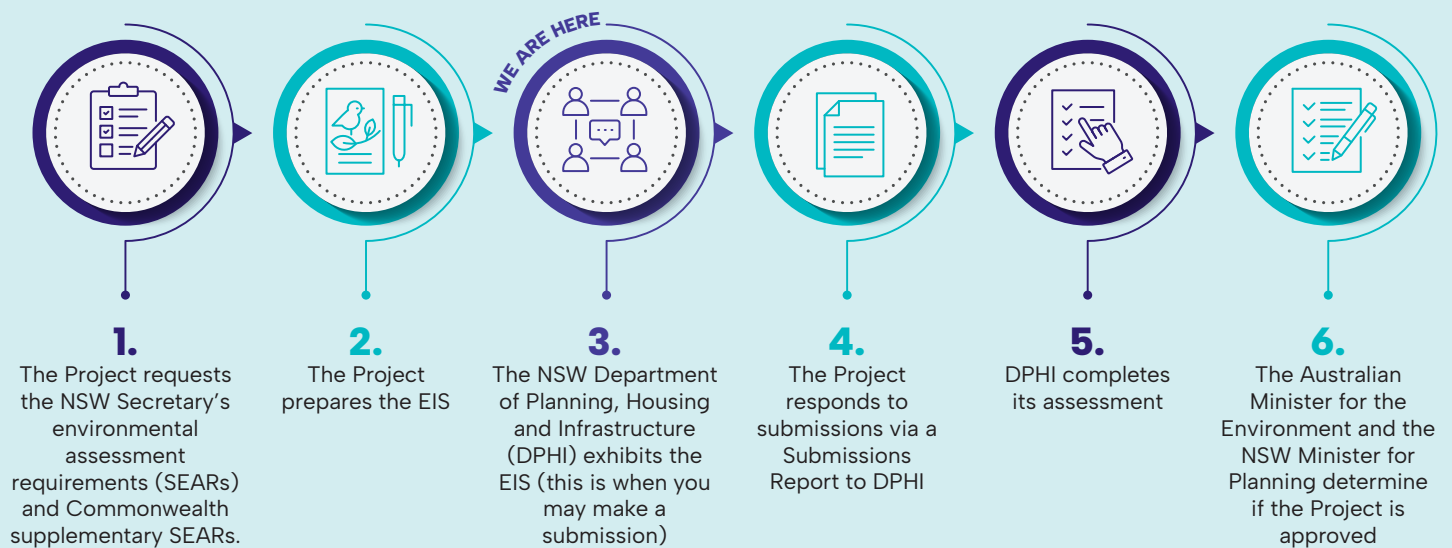
Why does the project need an EIS?

In June 2024, the NSW Minister for Planning and Public Spaces declared Lake Lyell Hydro a Critical State Significant Infrastructure (CSSI) project, recognising its importance to the state. An Environmental Impact Statement (EIS) is required in line with the SEARs for Ministerial approval.

The Project is also a 'controlled action' under the Environment Protection and Biodiversity Conservation Act 1999, requiring approval from the Australian Minister for the Environment. Assessment will occur under the bilateral agreement between the Commonwealth and NSW.

In summary, the Project requires approval from both the NSW and Australian Governments.

EIS process:



* A full overview of the approvals process can be found on page 25 of the EIS Summary document.

EIS Public Exhibition

The public exhibition of the EIS provides the community opportunity to review the EIS, ask questions and make submissions. The collection of public submissions is managed by DPHI. For the Project, the public exhibition period is 31 March to 28 April 2026.

DPHI determines how long the EIS will be on public exhibition. During this time, members of the public can submit their feedback directly to DPHI, via the NSW Planning Portal.

Public submissions are used by DPHI to guide the final determination, including any approval conditions if the Project is approved.

Acknowledgement

Lake Lyell Hydro acknowledges that the site of the proposed Project is on the traditional Country of the Wiradjuri People. We recognise their continued connection to land, waterways and community, and we pay our respects to Elders past and present.



Mount Walker and the Farmers Creek arm of Lake Lyell (as well as other locations nearby) have hosted scientists, engineers and other experts undertaking investigations to develop the Project design and identify the impacts of the project which are detailed in the EIS.

What is in the Lake Lyell Hydro EIS?

For Lake Lyell Hydro, 21 specialist studies were required to identify potential impacts and to propose mitigation measures. These specialist studies are what informed the technical reports. They show, in detail, the study methodology, along with impacts and proposed mitigation measures.

Each specialist study is covered in the main body of the EIS, with the technical studies available in the EIS appendices.

Chapters

1	Introduction.....	2 – 12
2	Strategic context.....	13 – 31
3	Project description	32 – 61
4	Statutory context.....	62 – 70
5	Community and stakeholder engagement	71 – 94
6	Water.....	95 – 119
7	Biodiversity	120 – 142
8	Heritage	143 – 160
9	Landscape and visual.....	161 – 180
10	Social and economic.....	181 – 197
11	Traffic	198 – 208
12	Noise and vibration	209 – 221
13	Air quality and greenhouse gas.....	222 – 226
14	Land.....	227 – 241
15	Hazards.....	242 – 258
16	Climate Change	259 – 262
17	Waste	263 – 264
18	Cumulative impacts	265 – 283
19	Environmental risk management	284 – 296

Appendices

D	Engagement and consultation
E	Mitigation measures
F	Surface water assessment
G	Groundwater impact assessment
H	Water licensing strategy
I	Excavated rock management strategy
J	Biodiversity development assessment report
K	Aquatic ecology assessment
L	Aboriginal cultural heritage assessment
M	Statement of heritage impact
N	Landscape and visual impact assessment
O	Social impact assessment
P	Economic assessment
Q	Traffic impact assessment
R	Noise and vibration impact assessment
S	Air quality impact assessment and greenhouse gas assessment
T	Soils, land use and rehabilitation assessment
U	Bushfire assessment
V	Contamination preliminary site investigation
W	Electric and magnetic field assessment
X	Climate change risk assessment
Y	Waste management assessment

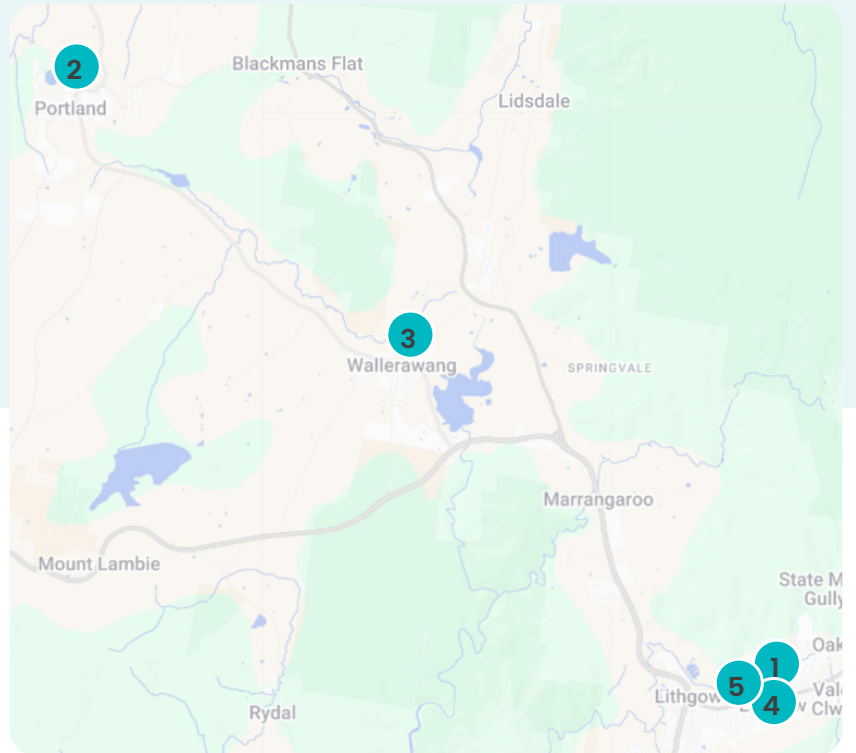
Lake Lyell Hydro EIS

Where can I find the EIS?

There are two ways to access an EIS, online via the Major Projects Hub on the NSW Planning Portal

(www.planningportal.nsw.gov.au/major-projects/projects) or in-person at:

1. Lithgow Library – 157 Main Street, Lithgow
2. Portland Library – 65 Williwa Street, Portland
3. Wallerawang Library – 40 Main Street, Wallerawang
4. Lithgow City Council – 180 Mort Street, Lithgow
5. Project HQ – 124 Main Street, Lithgow



Three ways to find information in the EIS

How much of the EIS you will need to read will depend on the level of detail you are looking for.

Option 1 – Environmental Impact Statement – Summary

The EIS Summary is an overview of the information contained within the EIS. It's written in plain English with the results of technical studies condensed.

The summary is only 55 pages, making it easy to navigate to the sections of interest or read in its entirety.

The EIS summary is a good starting point for anybody wanting information on the Project and the EIS.

Option 2 – Environmental Impact Statement – Chapters

The EIS Chapters are available in full online and in hard copy.

This EIS takes the technical reports and makes the language more accessible for the reader.

Each technical study is covered in the EIS main report. The report shows, in detail, how the technical studies and mitigation measures meet the requirements of the Secretary's Environmental Assessment Requirements (SEARs) and Supplementary SEARs.

These chapters are long but are easy to navigate in both online and in hard copy.

Option 3 – Technical Reports

Written by independent subject matter experts, the EIS Technical Reports directly address the requirements of the Planning Secretary's Environmental Assessment Requirements (SEARs) and the Commonwealth's Supplementary SEARs.

These are technical documents that address criteria. While the Summary and chapters are easier to understand, technical documents are made available for those in the community with a background or special interest in a specialty or specialties.

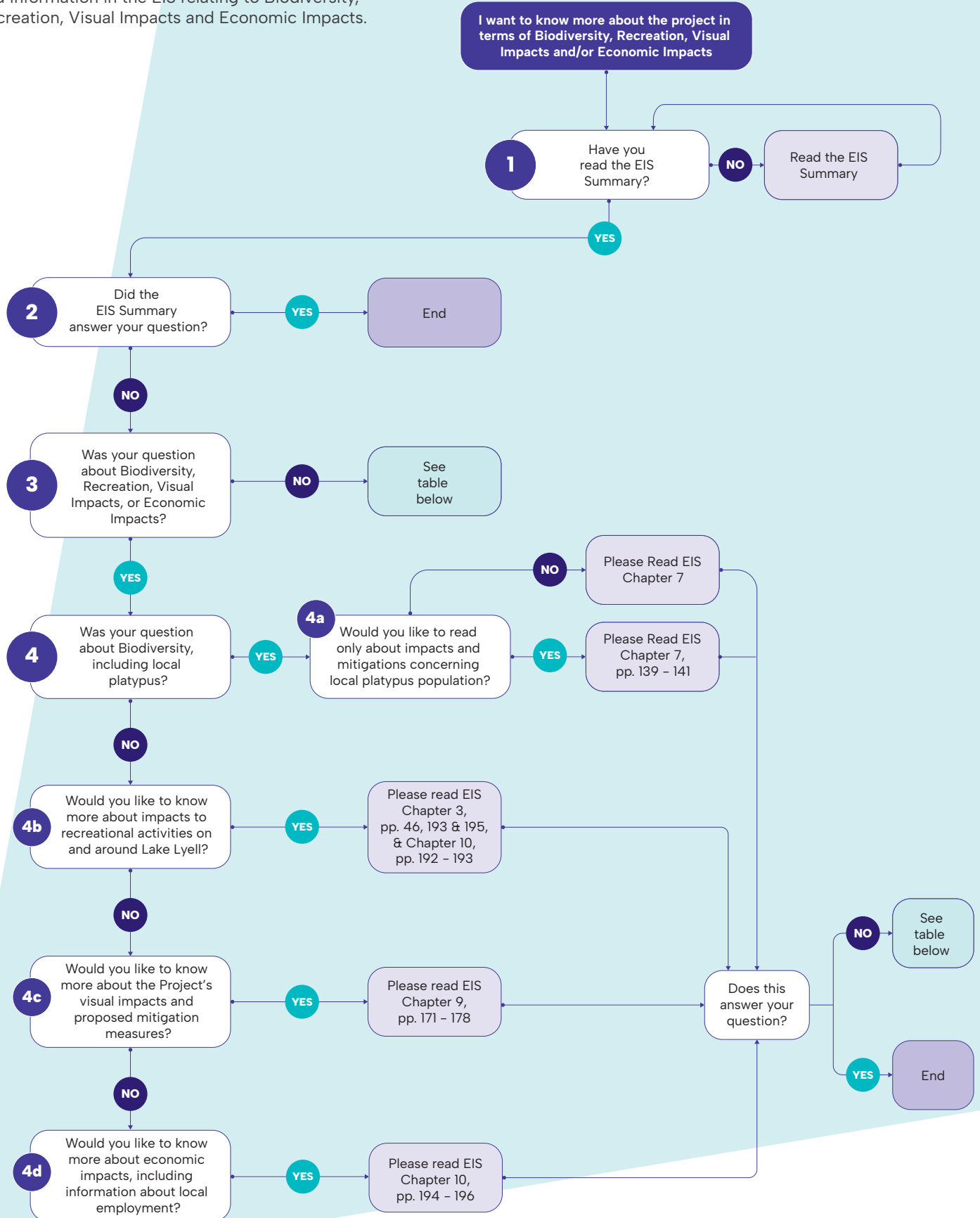


Where to find the answers to the most frequently asked questions

Since 2021 we have been consulting the local community about the Project and listening to the topics that matter most to people. In the flowchart and table below you will find the most frequently asked questions and topics and where they are addressed in the EIS.

The big 4 Topics

Follow the flow chart to find out where you can find information in the EIS relating to Biodiversity, Recreation, Visual Impacts and Economic Impacts.



Question/topic	Available resources
Aboriginal Cultural Heritage	
What is an Aboriginal cultural heritage assessment?	Appendix L – Aboriginal Cultural Heritage Assessment, pp. 1 – 3
How the Aboriginal cultural heritage assessment was conducted and who conducted it	EIS Summary p. 4 EIS Chapter 8, p. 143 Appendix L – Aboriginal cultural heritage assessment, p. 1
How First Nations people participated in the assessment	EIS Summary p. 36 and 48 EIS Chapter 8, p. 152 Appendix L – Aboriginal cultural heritage assessment, pp. 9 – 17
Impacts to culturally significant sites and proposed mitigation measures	EIS Summary p.36 EIS Chapter 8, pp. 152 and 157 Appendix L – Aboriginal cultural heritage assessment, pp. 123 – 132
How First Nations people would remain involved in the Project as it progresses	Appendix D – Engagement and consultation report
How to provide feedback or raise concerns about Aboriginal cultural heritage once construction has started	Aboriginal cultural heritage assessment fact sheet Project website: www.lakelyellpumpedhydro.com.au
Biodiversity and Environmental Impacts	
How was the biodiversity study conducted, and who conducted it?	EIS Summary p. 4 EIS Chapter 7, p. 120
Animal impacts, including impacts to local platypus population, fauna corridors, breeding areas, and endangered species	Biodiversity fact sheet EIS Summary p. 35 and p. 46 EIS Chapter 7, pp. 135 EIS Appendix J – Biodiversity development assessment report pp. 200 EIS Appendix K – Aquatic ecology assessment p. 121
Loss of bushland, including hollow-bearing trees	Biodiversity Fact Sheet EIS Summary p. 35 EIS Chapter 7, p. 135 EIS Appendix J – Biodiversity development assessment report, p. 200
Biodiversity credits and offsets?	Biodiversity Fact Sheet EIS Summary p. 46 EIS Chapter 7, p. 140 EIS Appendix J – Biodiversity development assessment report, p. 252 EIS Appendix K – Aquatic ecology assessment, p. 160
Community Engagement and Feedback	
How can the public provide feedback on their topic of interest?	EIS submission – This information sheet provides details on how to make a submission to DPHI
How to provide feedback or raise concerns about noise and traffic once construction has started	Air quality, noise and vibration fact sheet Project website: www.lakelyellpumpedhydro.com.au
How the community has informed Project planning and design	Appendix D – Engagement and Consultation Report, pp. 52 – 79
Economic and Social	
How the economic assessment was conducted and who conducted it	EIS Chapter 10, p. 181 Appendix P – Economic assessment, p. 8
Local employment during construction and operation, including what measures will be taken to ensure locals are prioritised for jobs	Economic impacts fact sheet EIS Summary, p. 54 EIS Chapter 10, p. 194 Appendix P – Economic assessment, p. 7 and 36
How the Project workforce will impact the local community	EIS Appendix O – Social impact assessment, p. 63
Have locals been involved in deciding where the worker’s accommodation will be built?	EIS Appendix D – Engagement and consultation report EIS Appendix O – Social impact assessment, pp. 40 – 42

Question/topic	Available resources
With worker's accommodation bringing many people into town, what measures are being taken to protect the social characteristics of the town	EIS Summary p. 49 EIS Appendix N – Landscape and visual impact assessment EIS Appendix O – Social impact assessment EIS Appendix P – Economic impact assessment EIS Appendix Q – Traffic impact assessment EIS Appendix T – Soil, land and rehabilitation
Landscape & Visual	
How the landscape and visual assessment was conducted and who conducted it	EIS Summary p. 4 EIS Chapter 9, pp. 161 – 171 EIS Appendix N – Landscape and visual impact assessment, pp. 161 – 171
Visual impact and mitigation measuresw	EIS Summary pp. 38 – 40 EIS Chapter 9, pp. 171 – 178 EIS Appendix E – Mitigation measures, pp. E.22 – E.23 EIS Appendix N – Landscape and visual impact assessment, pp. 50 – 71 and 78 – 89
What happens to the facility at the end of the operating life of the Project	Appendix B1 – Detailed project description, p. 96
Noise & Vibration	
How was the study on noise and vibration conducted and who conducted it?	EIS Summary p. 4 EIS Chapter 9, pp. 209 – 211
When will high-noise construction take place?	EIS Summary p. 42 and p. 49 EIS Chapter 12, pp. 212 – 215 Appendix E – Mitigation measures, pp. E.22 – E.23 Appendix R – Noise and vibration impact assessment, pp. 36 – 45 and 52 – 55
Project Rationale & Site Selection	
Why is the proposed project hydro energy storage rather than batteries?	EIS Summary pp. 21-22 EIS Chapter 2 – Strategic context EIS Chapter 20 – Justification and evaluation of the Project
Why this site was chosen for the Project	EIS Summary pp. 22-23
Traffic & Transport	
How the traffic assessment was conducted and who conducted it	EIS Summary p. 4 EIS Chapter 11, pp. 198 – 201
Anticipated vehicle movements and their impact during construction and operations	EIS Summary pp. 14, 17, 18, 38, 41, 48, 49 EIS Chapter 11, p. 202 EIS Appendix Q – Traffic impact assessment, pp. 53 – 69 and 73 – 100
Water & Recreation	
How the recreation assessment was conducted and who conducted it	EIS Summary p. 4 EIS Chapter 11, pp. 198 – 201
How recreation is affected during construction and operation	EIS Summary p. 14, 22 EIS Chapter 10, pp. 192 – 193 EIS Appendix O – Social impact assessment, pp. 70 – 73, 76, 91 – 96
What to expect with fish populations and re-stocking	EIS Summary p. 35 EIS Chapter 7, p. 141 EIS Appendix K – Aquatic ecology assessment, pp. 140 and 160
Lake level changes	EIS Summary p. 19 and pp. 33 – 34 EIS Chapter 6, pp. 108 – 109 and 116 – 117 Appendix F – Surface water assessment pp. 96, 124 – 126
Recreational activities on and around Mount Walker	EIS Chapter 3, pp. 46, 193 and 195 Appendix O – Social impact assessment, pp. 91 – 95

If you are having trouble locating your section of interest, please visit Project HQ or call us on 1800 574 947 and we can assist you in person.

How to make a submission

To make a submission you will be required to establish a Major Projects account on the NSW Planning Portal. Step by step instructions, frequently asked questions and details on how to contact the Department's customer support team are available at www.planningportal.nsw.gov.au/major-projects/have-your-say.

For more information visit lakelyellpumpedhydro.com.au

Learn more



Get in touch

E community@lakelyellpumpedhydro.com.au

P 1800 574 947

A Project HQ,
124 Main St, Lithgow

W lakelyellpumpedhydro.com.au

Proudly funded by



Public acknowledgement and disclaimer. This project is proudly funded by the NSW Government's Pumped Hydro Recoverable Grants Program. The views expressed are not necessarily the views of the NSW Government. The NSW Government does not accept responsibility for any information or advice provided.